



Your Solutions



URSOL is a company formed to become your sustainable solutions provider with our innovative products. We are proud to ourselves by providing solutions to you and be your preferred partner while enjoying the journey to success.

We started as a research based company located in Miri Sarawak. With our continuous improvement in competency of our research team, we strive to develop out the highest CP value and sustainable products to our customer. Till now, products manufactured by **URSOL** can be categorized into a total of 5 operating segments under our brand names of **WOOD SOLUTIONS, PAINT SOLUTIONS, CONSTRUCTION SOLUTIONS, CLEAN AND CLEANSE SOLUTIONS** and **PLANT SOLUTIONS**.

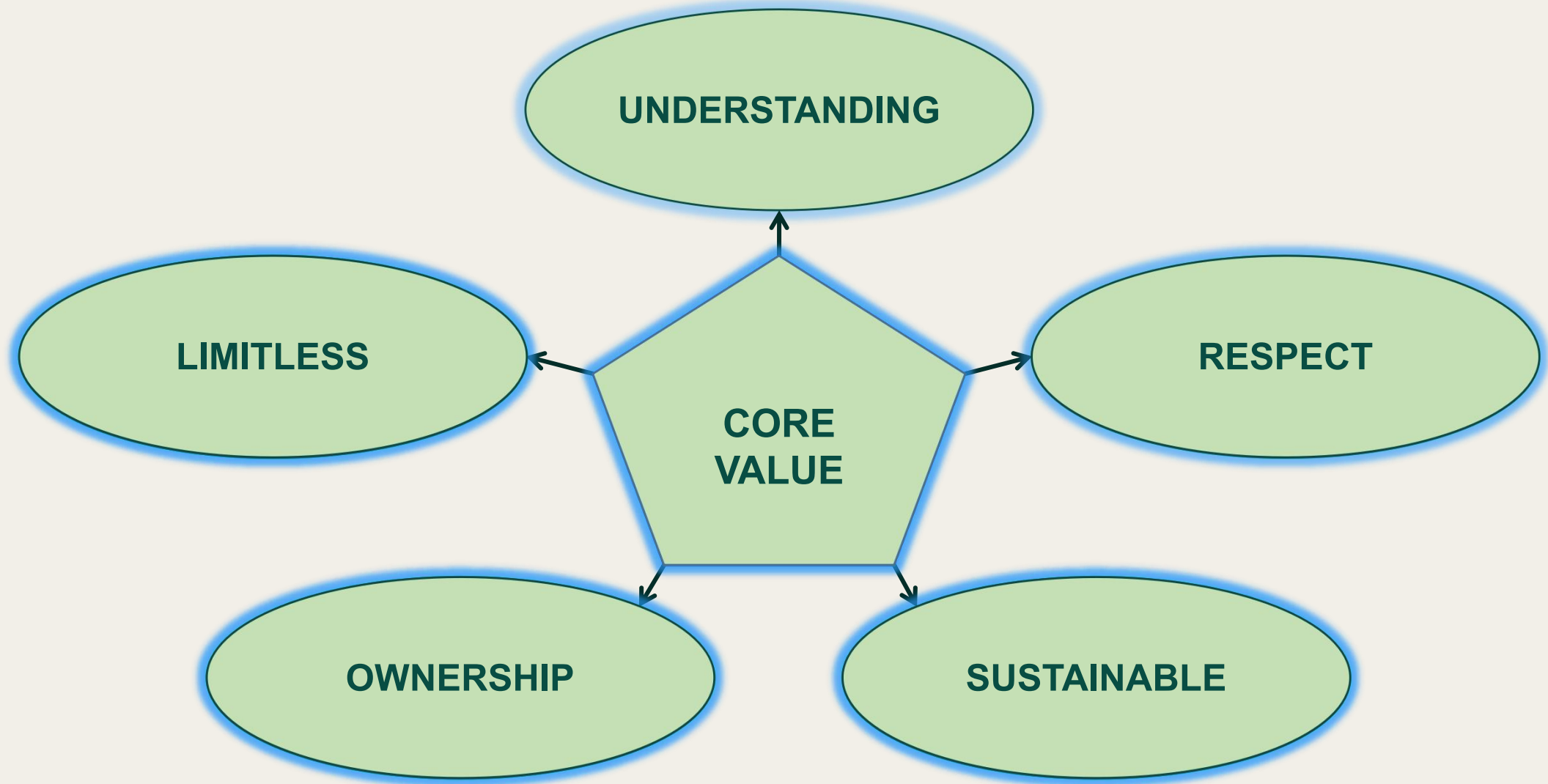
We strive to be a company required by society through contributing towards the sustainable growth of our society and environment for a better life.

VISION

To Create Sustainable Value Solutions for Better Life

MISSION

- ★ **Understanding Customer Needs** - We strive to be preferred partner of our customers through customer satisfaction from our sustainable solutions with highest CP value and consistent supply of products.
- ★ **Respect** - We strive to gain our respect and trust by honesty, integrity and competency.
- ★ **Sustainable** - We strive to be a company required by society through contributing and creating value in order to delivering the sustainable solutions for a better society and environment.
- ★ **Ownership** - We strive to become a sustainable growth and profit-oriented organization through loyalty and team work with accountability result.
- ★ **Limitless Innovation** - We strive to continue improve our products through sharing, positive and innovative thinking and never give up spirit while enjoying the journey to success.



Your Sustainable Value Solutions for Better Life

COMPANY MILESTONES



Wood Solutions

- Formaldehyde Scavenger
- Hardener
- Wood Putty

Wood Solutions

- Formaldehyde Scavenger
- Hardener
- Wood Putty
- Industrial Flour
- Log Sealant
- Veneer Tape

Wood Solutions

- Formaldehyde Scavenger
- Hardener
- Wood Putty
- Industrial Flour
- Log Sealant
- Veneer Tape

Paint Solutions

- Wood Coating
- Architectural Paint
- Wood and Metal Paint

Clean and Cleanse Solutions

- Disinfectant





Provide paints products and services to all kind of industry

- Wood Coating
- Interior and Exterior Sealer
- Interior and Exterior Paint
- Wood and Metal Paint
- Protective Coating
- Heavy Machinery Coating
- Marine Paint



Provide specialty chemicals and services for wood industry

- Formaldehyde Scavenger
- Hardener
- Wood Putty
- Industrial Flour
- Palm Kernel Shell Powder
- Log Sealant
- Veneer Tape



Provide disinfectant and cleaning products

- Sanitizer (Fogging, Surface, Hand)
- Household Cleaner (Kitchen Cleaner, Floor Cleaner, Toilet Cleaner, Glass Cleaner, Dish Washing, Laundry Detergent, Multi Purpose Cleaner, Pot&Pan Cleaner, etc.)
- Industrial Cleaner (Industrial Degreaser, Metal Cleaner, Heavy Duty Multi Purpose Cleaner, Janitorial Cleaner, etc.)
- Transportation Cleaner (Car Wash, Truck Wash, Wax, Windshield Treatment and etc)



Provide specialty chemicals and services for construction industry

- Waterproofing (Cement Modifier, Cementitious Waterproofing, Elastomeric Waterproofing Coating and etc)
- Admixture (Bonding Agent and etc)
- Building Finishing (Grout, Wall Putty, Render, Skim Coat, Joint Compound)
- Sealing & Bonding (Silicone Sealant)



Provide specialty chemicals and services for agriculture sector

- Potting Media
- Potting Soil
- Soil Conditioner
- Inorganic Fertilizer
- Compound Fertilizer
- Organic Fertilizer
- Organic Pesticide

WOOD SOLUTIONS

*Enhance Your Wood Quality
with Our Solution*

PRODUCTS

- Formaldehyde Scavenger
- Hardener
- Industrial Filler
- Wood Putty
- Veneer Tape
- Log Sealant

FORMALDEHYDE SCAVENGER



FC-100

- **Over 90% reduction** of formaldehyde emission
- Pre-treatment in glue mixture
- Compatible with a wide range of glue which are UF, MUF and LFE glue



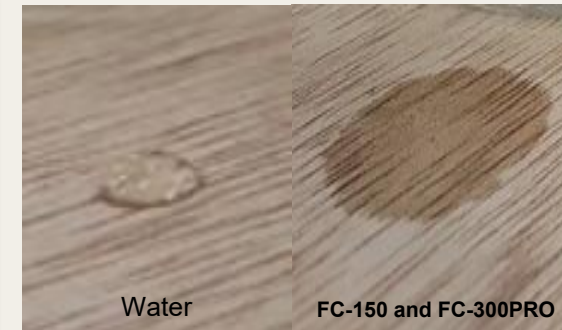
FC-150

- Upgrade F☆☆☆ → F☆☆☆☆
- Superior wetting property and good in penetration into the wood surface
- Post-treatment on the panel after hot press
- Pre-treatment on the veneer



FC-300 PRO

- Upgrade F☆☆ → F☆☆☆☆
- Secure in formaldehyde control, especially for floor-based panel and thin panel.
- Superior wetting property and good in penetration into the wood surface
- Post-treatment on the panel after hot press
- Pre-treatment on the veneer



Your Wood Solution To Meet The International Highest Formaldehyde Control Standard

JAS F☆☆☆☆

AS/NZS Super EO
($<0.3\text{mg/L}$)

US TSCA Title VI / CARB
ATCM Phase II
($<0.05\text{ppm}$, approx. 0.376mg/L)

Taiwan CNS F1
(0.3mg/L)

Catcher Products	Products Descriptions	Application	Main Benefits
FC-100	<ul style="list-style-type: none"> ➤ Formulated with stable and consistent quality to remove formaldehyde in glue effectively. 	<ul style="list-style-type: none"> ➤ Post added in glue ➤ Spray or roller coating on the products after hot press ➤ Dosage: max 18% of resin weight 	<ul style="list-style-type: none"> ➤ Stable result even after a long period of time ➤ Balance between cost and performance
FC-150	<ul style="list-style-type: none"> ➤ Effective accelerator to remove formaldehyde ➤ Superior in wetting property and good in penetration into the treated surface 	<ul style="list-style-type: none"> ➤ Spray or roller coating on the product after hot press ➤ Spray/coating Volume: 3-6g/ft² for both face and back ➤ Spray on the green veneer before the dryer 	<ul style="list-style-type: none"> ➤ Excellent wetting properties to ensure deep penetration and coating evenness
FC-300 PRO	<ul style="list-style-type: none"> ➤ Excellent accelerator to remove formaldehyde ➤ Superior in wetting property and good in penetration into the treated surface 	<ul style="list-style-type: none"> ➤ Spray or roller coating on the product after hot press ➤ Spray/coating Volume: 3-6g/ft² for both face and back 	<ul style="list-style-type: none"> ➤ Excellent wetting properties to ensure deep penetration and coating evenness

Water vs. FC-300PRO – Penetration into wood



Hardener H-1

- Used as cross linker in Urea-Formaldehyde (UF) and Melamine -Urea-Formaldehyde (MUF) resin
- Stable and consistency in pot life increment
- Improve in pre-bonding and mechanical properties
- Dosage recommended: 0.5-1.5% of resin
- * Dosage may vary depending on the glue formulation



Industrial Flour F-1

- Non wheat based Industrial Flour
- More than 40% cost saving as compared to conventional wheat-based industrial flour

PF Glue (WBP)

- 50-100% replacement of conventional wheat-based industrial flour in Phenol-Formaldehyde (PF) adhesive
- Pass JAS TS (WBP) Bonding Test

UF, MUF Glue

- 25-50% replacement of conventional wheat-based industrial flour in Urea Formaldehyde (UF) and Melamine Urea Formaldehyde (MUF) adhesive
- Pass JAS T2 and T1 Bonding Test, no effect on Formaldehyde Emission reading
- As a natural colorant in UF and MUF glue, improve process control at the glue spreader section for easy checking on the unglued area and uneven gluing.

Material Properties

- Eco-friendly and non-toxic
- 10-15% protein content

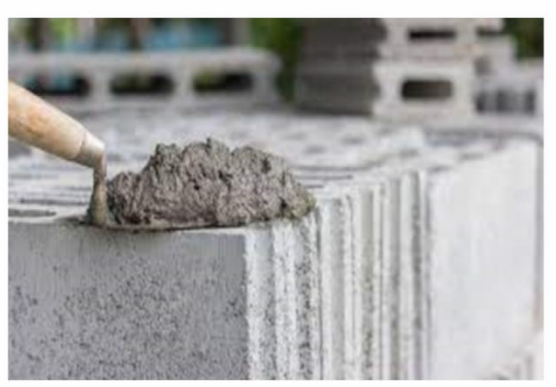


Industrial Flour F-2

- Thanks to the unique high-temperature resistance properties of the powder, which will improve the glue heat resistance in a high-temperature hot press and enhance the mechanical properties of the glued panel, especially using Phenol-Formaldehyde (PF) adhesive.
- Used in various form of applications for both technical and environmental benefits varying from additive, as well as a composite matrix
- Recommended and commonly used as a compound filler for thermoset moulding powders like bakelite, synthetic resin and glue
- Raw material for mosquito coil, incense stick and briquette



Compound filler in PF glue



Composite matrix in cement



Raw Material in briquette



Raw Material in mosquito coil

Products	Application	Specification	Dosage
Industrial Flour (F-1)	<p>PF Glue</p> <ul style="list-style-type: none"> ➤ Recommended for PF glue with 50-100% replacement of flour <p>UF, MUF Glue</p> <ul style="list-style-type: none"> ➤ Recommended for UF and MUF glue with 25-50% replacement of flour 	<ul style="list-style-type: none"> ➤ Powder with particle 60 mesh and above ➤ Viscosity (3:1): 50-60cps (Brookfield: Spindle 4, 60rpm) ➤ pH: 4.0-7.0 ➤ Moisture %: Max 13 	<p>Recommended Dosage: 25-100% replacement for flour</p> <p>* Dosage may vary depending on the glue formulation</p>
Industrial Flour (F-2)	<ul style="list-style-type: none"> ➤ Improve thermal resistance of glue ➤ Recommended for phenolic glue 	<ul style="list-style-type: none"> ➤ Powder with particle 60 mesh and above ➤ Viscosity (2:1): 30-40cps (Brookfield: Spindle 4, 60 rpm) ➤ pH: 4.0-7.0 ➤ Moisture %: Max 13 	<p>Recommended Dosage: 50-100% replacement for flour</p> <p>* Dosage may vary depending on the glue formulation</p>

WOOD PUTTY



Properties	WP-6	WP-7	WP-8
Stain Resistance	✓		
Water Resistance	✓	✓	
Anti-shrinkage	✓	✓	✓
Crack Resistance	✓	✓	✓



Y7

Color: Natural



Y3

Color: OAK

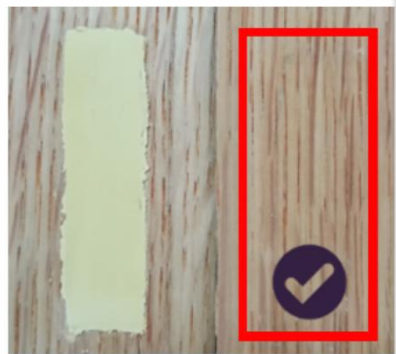


R4

Color: TEAK

WP-6

Market Product



Prevent Putty Stain penetrate through the surface of decorative veneer



Severe Putty Stain observed on the surface of decorative veneer

WP-6, WP-7

Market Product



Water Resistant of after T1, T2 and TS water soaking

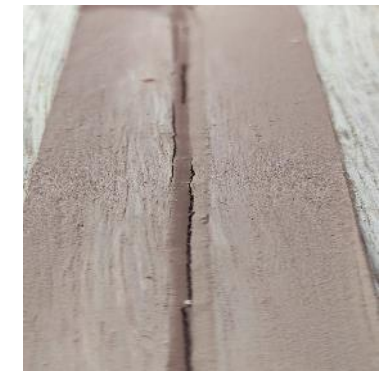
Putty loosed after T1, T2 and TS water soaking

WP-6, WP-7 and WP-8

Market Product



Anti shrink and anti crack



Shrink and crack observed

Products	Product Description	Application	Main Benefits
WP-6	<ul style="list-style-type: none">➤ Formulated with specialty materials to meet requirements for the wood industry which possesses excellent performance such as stain-resistance, water-resistance, adhesion and etc.	<ul style="list-style-type: none">➤ Strongly recommend for plywood, floor-based panel, furniture panel, block board and etc.➤ Stain resistance for plywood/wood panel used in decorative veneer lamination (especially Oak Veneer)	<ul style="list-style-type: none">➤ Chemical stain resistant➤ Excellent water resistant➤ Excellent anti shrinkage
WP-7	<ul style="list-style-type: none">➤ Formulated to meet general use for wood industry which possess excellent performance such as water resistant, shrinkage, adhesion, hardness and etc.	<ul style="list-style-type: none">➤ Recommend for general use in the wood industry, furniture industry, household and etc.➤ Special for the wood panel which require water resistance performance	<ul style="list-style-type: none">➤ Excellent in water resistant➤ Excellent in anti shrinkage
WP-8	<ul style="list-style-type: none">➤ Formulated to meet economic and general use for wood industry which possess good performance such as shrinkage, adhesion, hardness and etc.	<ul style="list-style-type: none">➤ Recommend for general use in wood industry, furniture industry, household and etc.	<ul style="list-style-type: none">➤ Anti shrinkage➤ Cost effective

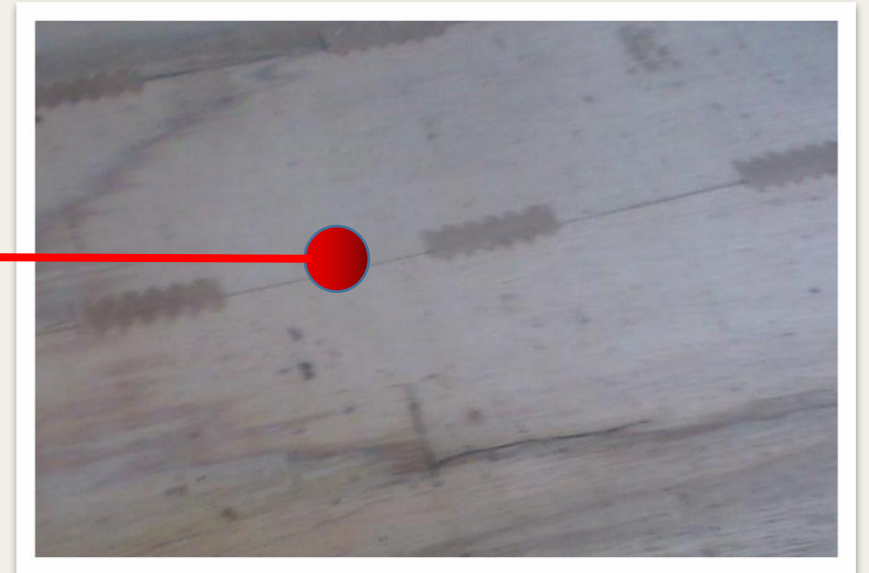
Our Technical Team Provide Product Development And Solution For All Your Wood Putty Related Problems

Tape Edge Composer (TEC) Gummed Tape

- Increase productivity and production recovery compared to conventional hot melt composer
- To join or repair green veneer
- Special heat-activated paper tape to provide a strong join of green veneer before dryer
- Excellent water resistant
- Stay strong even after the drying process therefore can prevent overlap defects on veneer



Tape width: 2" (49mm)



Log Sealant LS-1

- Non-toxic Elastomeric water-based sealer that protects freshly cut logs and lumber from damaging end splits
- Reduce the water loss from logs to keep the log freshness
- Can be applied to all species of hardwood or softwood
- Prevent blue stain and sap stain caused by damaging fungi
- Coverage: 1 kg of paint are able to cover 1-2 m² of surface



Without Log Sealant



With Log Sealant



It can be applied on the fresh cut saw timber to prevent further split



Your Paint Solution Partner

PRODUCTS

- Interior and Exterior Sealer
- Interior and Exterior Paint
- Wood and Metal Paint
- Wood Coating
- Protective Coating
- Heavy Machinery Coating
- Marine Paint

ULTRAPRIME Interior and Exterior Sealer

- Water-based sealer for cement wall, fiber cement, or gypsum wall
- Suitable for new and old wall
- Excellent efflorescence and alkaline resistant



Efflorescence Failure



Alkaline Resistant Failure



ULTRAGUARD Oxide Primer

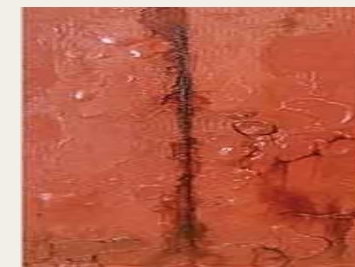
- Solvent-based anti-rust primer that gives primary protective coating on a ferrous surface
- Suitable for iron and steel surfaces such as gates, fences and etc.
- Good in adhesion and anti-rust properties



Adhesion Failure



Corrosion Failure



We Provide Solutions To Solve The Common Failure Of The Sealer And Primer

Products	Product Description	Application	Benefits
ULTRAPRIME (Interior and exterior sealer)	<ul style="list-style-type: none">➤ Formulated with water-based styrene-acrylic resin which possesses excellent in adhesion, alkaline and efflorescence resistant	<ul style="list-style-type: none">➤ Cement or concrete wall➤ New and old wall➤ Apply by brush or roller➤ Recommended 1 coat	<ul style="list-style-type: none">➤ Good in alkaline and efflorescence resistant➤ Suitable for exterior application
ULTRAGUARD (Oxide primer for ferrous metal surface)	<ul style="list-style-type: none">➤ Solvent based oxide primer formulated with oxide pigment which can protect your metal surface from corrosion and possess a good adhesion with the ferrous substrate➤ Oxide pigment plays an important role and protective layer which it will be oxidized preferentially before the metal surface is oxidized	<ul style="list-style-type: none">➤ Paint on the steel surface free from mill scale, dirt, grease, oil and other contaminants➤ Apply by brush or roller➤ Recommended 1-2 coat	<ul style="list-style-type: none">➤ Corrosion protection against acid and salt water



MEGAMAX



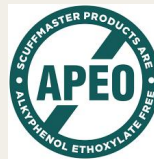
Good Hiding



ULTRAMAX



Low VOC



APEO Free



ULTRACLEAN



Easy Clean Surface



Low VOC



APEO Free



Economical

MEGAMAX EMULSION PAINT



Shop Lot Interior Wall

- Perfect balance between cost and performance

- Matt finishing make your space looks luxury

Living Room Interior Wall



ULTRAMAX INTERIOR PAINT

ULTRACLEAN INTERIOR PAINT



Kid's Room Interior Wall

- Protect your kids from harm VOC and keep your room clean



3 years of protection

- Economical
- Alkaline and fungal/algae resistant
- Reasonable durability against harsh weather conditions



5 years of protection

- Good in alkaline resistant, efflorescence resistant as well as dirt pick up resistant
- Good in UV protection
- Good in fungus/algae resistant



10 years of protection

- Excellent in alkaline resistant, efflorescence resistant as well as dirt pick up resistant
- Excellent in UV protection
- Excellent in fungus/algae resistant

YOUR EXTERIOR PAINTS SOLUTION



- Excellent performance against harsh weather condition



ULTRASHIELD PLUS
10 Years



- Good performance against harsh weather conditions



ULTRASHIELD
5 Years



- Reasonable durability against harsh weather conditions
- Economical



MEGASHIELD
3 Years



MEGASHIELD

ULTRALUXE Soft Matt Finishing

- Choose ULTRALUXE soft matt finish for elegant contemporary look
- Recommended for wood surface especially there are imperfection on the surface



ULTRALUXE Hi-Gloss Finishing

- Gloss finishing for a brilliant mirror-like shine
- Recommended gloss finish for metal surface or smooth steel surface
- Good protection of ferrous metal surface



ULTRACRYL 1K Gloss Finishing

- Fast drying
- High gloss
- Good weathering resistant
- Good Scratch Resistant



Part A

Part B

ULTRATHANE 2K PU Gloss Finishing

- 2 component polyurethane
- High gloss
- Excellent weathering resistant
- Excellent scratch Resistant
- Excellent durability for interior and exterior use



ecoMAX Emulsion Paint

- Water based
- Used as temporary marking purposes or for non-quality concern applications such as interior and exterior wood surface or cement surface
- Mainly in white color, other colors may available upon request but limited to the color availability



ecoLUXE Wood and Metal Paint

- Solvent based
- Used as temporary marking purposes or for non-quality concern applications such as interior and exterior wood surface or ferrous metal surface as well as for the road line marking
- Different color is available upon request and depending on the quantity ordered



- Enjoy a rebate up to 15% with our eco Packaging
- Variety of eco Packaging available:
 - 18L recycle pail
 - 25L recycle bung hole steel drum
 - 200L recycle bung hole plastic drum
 - 1000L IBC Tank
- All the open-top recycled packaging will be packed with inlet liner to prevent paint leaking and reduce product contamination.
- Bulk purchase quantity can be done by using your own packaging material also upon discussion, to reduce packaging cost and reuse back the packaging material





***Stay Clean and Stay Sanitize
with Our Clean and Cleanse
Solutions***

PRODUCTS

- Sanitizer (Fogging, Surface, Hand)
- Household Cleaner (Kitchen Cleaner, Floor Cleaner, Toilet Cleaner, Glass Cleaner, Dish Washing, Laundry Detergent, Multi Purpose Cleaner, Pot&Pan Cleaner, etc.)
- Industrial Cleaner (Industrial Degreaser, Metal Cleaner, Heavy Duty Multi Purpose Cleaner, Janitorial Cleaner, etc.)
- Transportation Cleaner (Car Wash, Truck Wash, Wax, Windshield Treatment and etc)



MULTIPURPOSE CLEANER



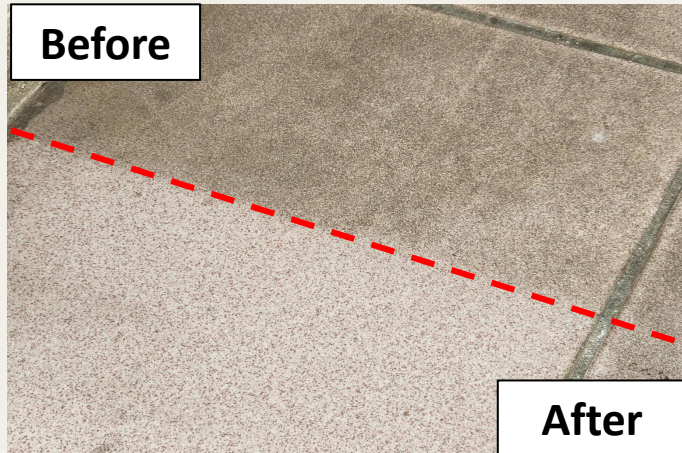
Tea and Coffee Stain Cleaning



Carbon Deposit Pan Cleaning



Floor Stubborn Stain Cleaning



Washroom Stain Surface Cleaning



Oily Surface Cleaning



Surface Sanitizer

- Kills germs, bacteria and viruses
- KKM/CDC/WHO recommended active ingredients
- Suitable for all types of hard surface
- Available in a different types of packaging such as 5L, 10L and 25L



Alcohol Based Instant Hand Sanitizer

- Kills germs, bacteria and viruses
- KKM/CDC/WHO recommended active ingredients
- Rinse free and non-sticky
- Available in a different types of packaging such as 30ml, 50ml, 100ml, 1L, 5L and 25L
- Available with fragrance-free and lemon fragrance
- Alcohol-Based





Kitchen Cleaner

- Remove oil stain on stovetop, countertop, etc



Dish Washing Liquid

- Leaving dishes sparkling clean



Glass Cleaner

- Shine and zero water mark



Laundry Detergent

- Remove tough stains
- Deep cleansing through penetration in fabric



Floor Cleaner

- Eliminate stains and Dirt on floor
- Kills germs, bacteria and viruses



Toilet Cleaner

- Eliminate tough stains
- Kills germs, bacteria and viruses



Pot & Pan Cleaner

- Clean carbon deposit on SS pan bottom
- Sparkling shine surface



Multi Purpose Cleaner

- Breakdown dirt, grease and grime with minimum scrubbing
- Suitable for very greasy and oily hand wash

INDUSTRIAL AND TRANSPORTATION CLEANER



Car Wash

- Formulated with wax for surface protection



Truck Wash

- Effectively removes toughest dirt, grime and road film



Windshield Treatment

- Effectively removes toughest dirt, grime and road film



Industrial Degreaser

- Removes stubborn soil dirt and grease
- Aircon coil and Engine cleaning



Metal Cleaner

- Removes grease and tarnish on metal surfaces
- Clean, polish and protect surface



Janitorial Cleaner

- House and hotel cleaning



Heavy Duty Multi Purpose Cleaner

- For industrial and kitchen greasy floor
- Cut through dirt, grease and grime with minimum scrubbing
- Iron stain remover





**construction
solutions**

***Your Construction Solution
Partner***

PRODUCTS

- Waterproofing (Cement Modifier, Cementitious Waterproofing, Elastomeric Waterproofing Coating and etc)
- Admixture (Bonding Agent and etc)
- Building Finishing (Grout, Wall Putty, Render, Skim Coat, Joint Compound)
- Sealing & Bonding (Silicone Sealant)

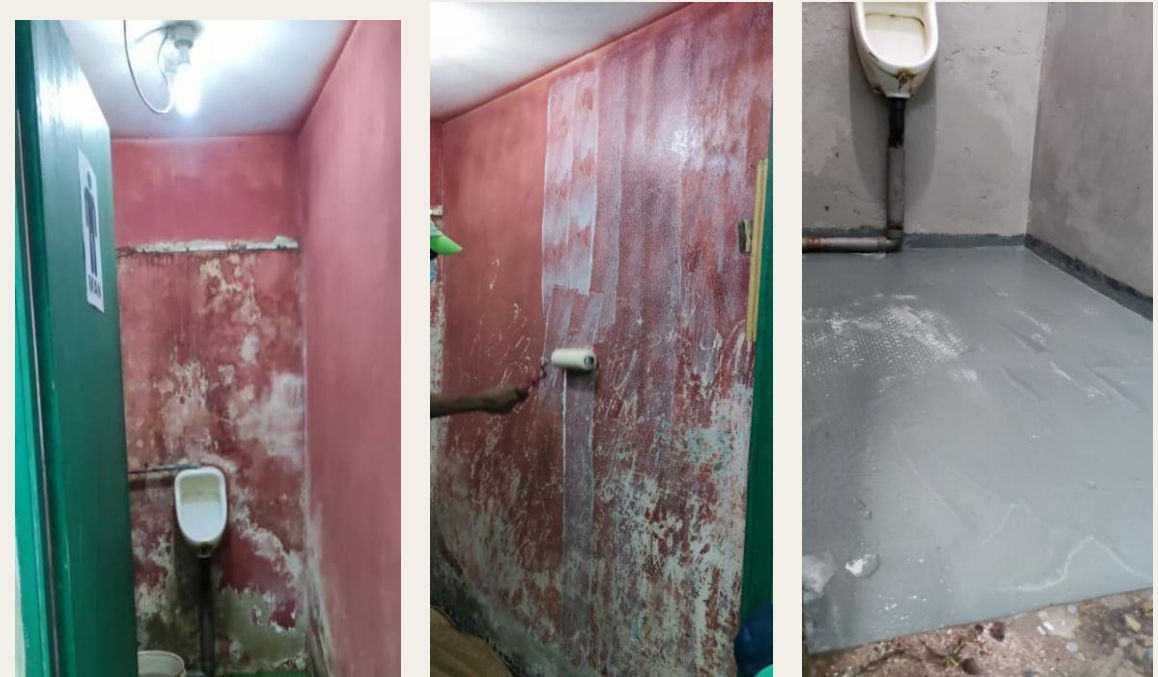
- 1K Elastomeric Waterproofing Membrane
 - Excellent elongation
 - Long pot life
 - Smooth surface

Waterproofing on the metal roof repairing



- 2K Cementitious Waterproofing Slurry
 - Economical
 - Short pot life
 - Cement like surface

Cementitious Waterproofing Applied at Toilet Area



Cementitious Waterproofing

- Two-part polymer modified cementitious waterproof mortar slurry comprising of a liquid polymer and a cement-based mix incorporating special admixtures. It is applied to concrete and mortar to prevent water infiltration.
- Can be used for interior and exterior waterproofing and damp-proofing of concrete, cementitious rendering, brickwork and blockwork

Cement Modifier

- Ready to use liquid modifier for waterproofing primer and enhancing the adhesion strength of mortar, plastering cement, cement/sand screed, render mortar, grouting cement and etc.

Admixture/Bonding Agent

- Additive to improve the bonding and adhesive strength of thin and medium bed adhesive mortar application
- Can be used for base coat for floor screeds, flexible adhesive for tiling and glazing, patching mortar, repair mortar and etc.

Elastomeric Waterproofing Coating/Membrane

- Ready to use liquid coating for sealing crack and joint on wall, ceiling and roof by forming a tough continuous water proofing membrane

Wall Putty

- Putty Filler is a ready to use multipurpose filler for interior and exterior applications.
- It is ideal for filling cracks, small joints and leveling uneven surfaces to an even and smooth finish before painting. It is fast drying, easy to apply, saves time and economical.

**QUALITY
ASSURANCE
&
TECHNICAL
SUPPORT**

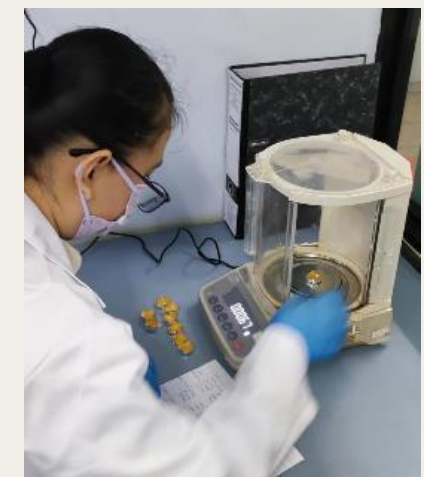
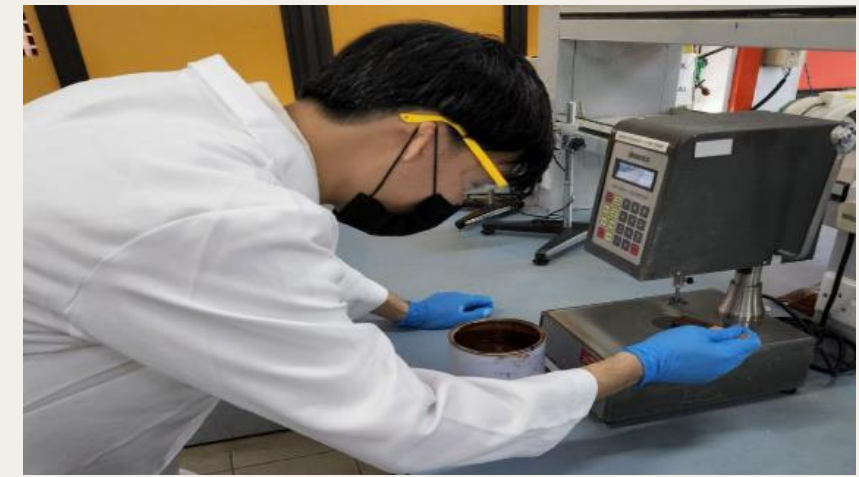


*Our Quality Assurance,
Your
Sustainable Value Solutions*

QUALITY ASSURANCE



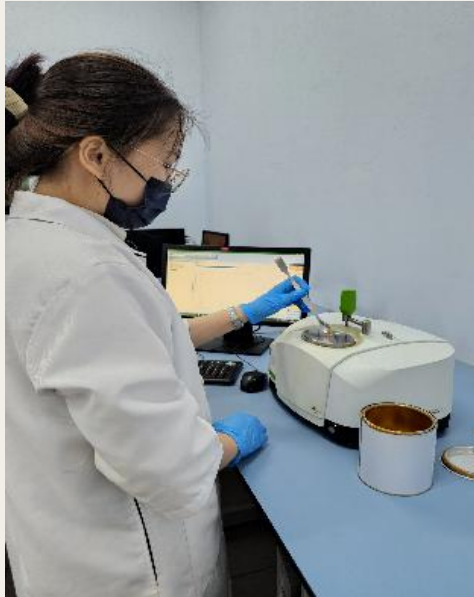
- We believe that quality product is our strategy for success where every batch of raw materials will go through strict quality control checking to ensure our products can meet the quality assurance and customer satisfaction
- Every shipment of our product is accompanied by a COA under our QA department to assure the customers about the proper and consistent quality of the product.



RESEARCH AND TECHNICAL SUPPORT



➤ Research and product development are our business backbone. Researchers and professionals are doing research and product development every day in our laboratories to ensure that we can provide more and more solutions to our customers and society.





Your Solutions Partner