

# WOOD PUTTY WP-6

## Fix Surface Defect

WOOD PUTTY WP-6 is a ready mixed putty formulated to meet the specific requirements of the wood industry for filling cracks, joints and to level up uneven rough surfaces. It is very easy to apply.

WOOD PUTTY WP-6 possess excellent chemical stain resistance and exhibit excellent performances in properties such as adhesion, water resistant and hardness. Making it multi purpose which can be used on all wooden surfaces such as plywood, floor based panel, fancy oak veneers, panel, block board, furniture, etc.

- ✓ **Easy Application**
- ✓ **Fast Dry Time**
- ✓ **Excellent Chemical Stain Resistant**
- ✓ **Excellent Anti Shrinking**
- ✓ **Excellent Water Resistant**
- ✓ **Low Odour and Low VOC**

### APPLICATION

1. Ensure surfaces are clean, dry and well bound.
2. Apply with stainless steel putty knife, trowel or spatula.
3. Sand with sand paper to smoothen the surface.

### STORAGE

Store putty in cool dry place and away from heat. Close the lid tightly after use to avoid putty self-hardening.

### PACKAGING

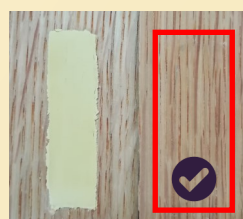
1kg, 5kg, 30kg and 300kg

### SPECIFICATIONS

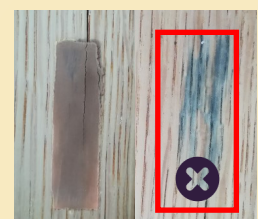
Appearance	: Semi solid
Colour	: Various wood color (Colour can be formulated based on customer requirement)
Odour	: Odourless
pH @ 30°C	: 7.0 - 10.0
Solid Content	: 75% - 85%
Bulk Density	: 1.5 - 2.5g/ml
Drying Time	: Surface Dry - 5 minutes @ 40°C (Depend on defect) Hard Dry - 30 minutes @ 40°C
Diluting Agent	: Clean Water, maximum up to 2%
Remarks	: The putty is manufactured for ready to use purpose. Do not over dilute with water. This may affect the quality of the product.

### Main Benefit:

WP-6 is special formulated with excellent chemical stain resistant materials especially for floor based panel and wood furniture application which can prevent the chemical stain appear over the time even in a very harsh environment conditions.



Stain resistant



Chemical stain